



## UPDATE

Jenner Contractors Ltd continue to work on the first phase of apartments and houses on Folkestone Seafront under enhanced safety guidelines, adapting to all evolving legislation and guidance from the government, the Construction Leadership Council (CLC) and their own professional safety advisors.

The new homes will be close to the Leas Lift and Coastal Park and will feature spectacular views out to sea and along the coast. As well as private gardens the development will include shingle gardens that lead to the Boardwalk and to the beach beyond, and a new piazza will be created at the base of the Leas Lift.

Construction of the first phase has been divided into three parts, The East Block, Town Houses and the West Block. The build sequence commences in the East working through the Town Houses to the West. The reinforced concrete frame is progressing on the East Block with work currently taking place on the third-floor slab. The podium level slab has been cast on the West Block and the team are constructing the walls and columns up to the first floor. The following images were captured during December while this work was taking place.



Image: Folkestone Harbour & Seafront Development Co.



Image: Folkestone Harbour & Seafront Development Co.

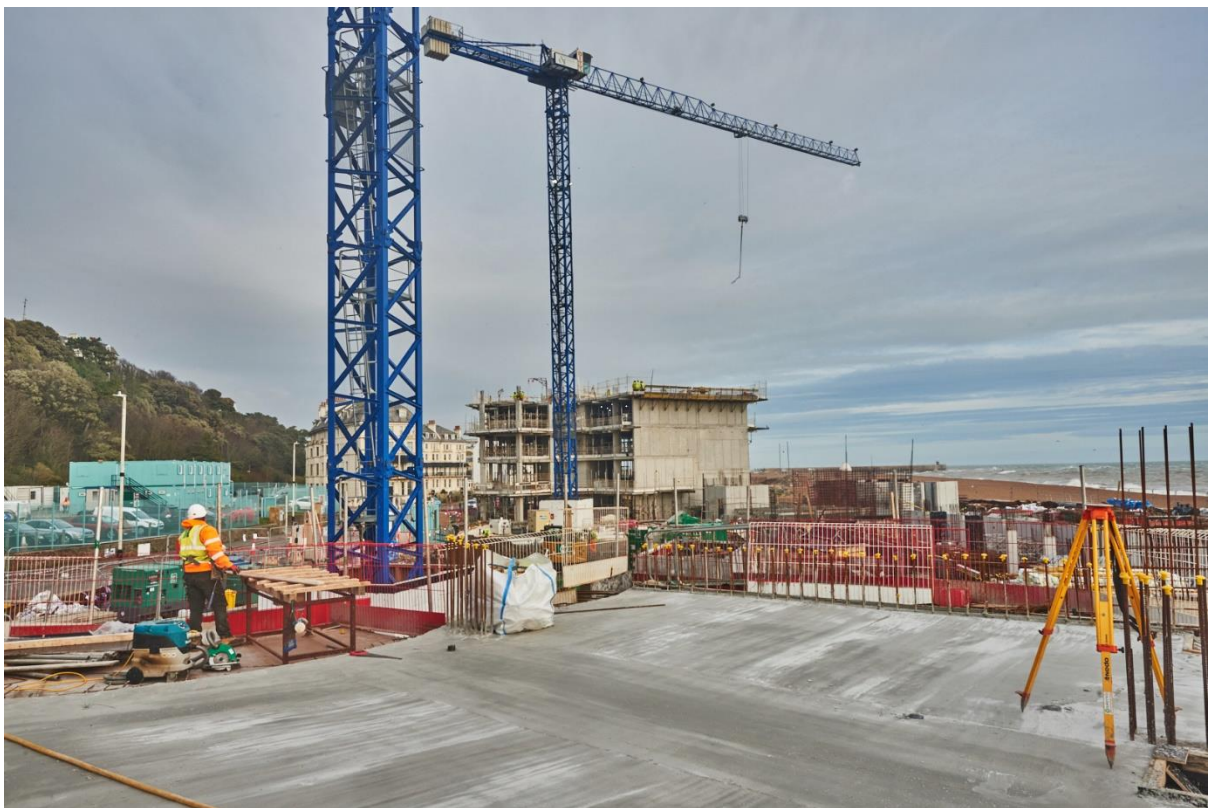


Image: Folkestone Harbour & Seafront Development Co.



Image: Folkestone Harbour & Seafront Development Co.



Image: Folkestone Harbour & Seafront Development Co.



Image: *Folkestone Harbour & Seafront Development Co.*

We look forward to providing further updates in the coming weeks. If you know of someone else who might like to receive news of our plans, they can do so by signing up to our mailing list here: [www.folkestoneseafront.com](http://www.folkestoneseafront.com)